

§ 255-6 FLOOR AREA

	RIGHT UNIT	LEFT UNIT
SECOND FLOOR	1,156 SQ. FT.	1,156 SQ. FT.
THIRD FLOOR	1,159 SQ. FT.	1,159 SQ. FT.
TOTAL FLOOR AREA	2,315 SQ. FT.	2,315 SQ. FT.
TOTAL	4,630 SQ. FT. < 4,655.95 (65%) ALLOWED	
FIRST FLOOR	1,184 SQ. FT.	1,184 SQ. FT.
TOTAL FIRST FLOOR	2,368 SQ. FT.	
GRAND TOTAL FLOOR AREA	6,998 SQ. FT. (98%)	

- FIRST FLOOR = 1,326 SQ. FT. - [(87 SQ. FT. FOR EXTERIOR WALLS + 55 SQ. FT. FOR STAIRWAYS/ STAIRWELLS)] = 1,184(2) SQ. FT. = 2,368 SQ. FT.
- SECOND FLOOR = 1,326 SQ. FT. - [(87 SQ. FT. FOR EXTERIOR WALLS + 83 SQ. FT. FOR STAIRWAYS/ STAIRWELLS)] = 1,156(2) SQ. FT. = 2,312 SQ. FT.
- THIRD FLOOR = 1,326 SQ. FT. - [(87 SQ. FT. FOR EXTERIOR WALLS + 80 SQ. FT. FOR STAIRWAYS/ STAIRWELLS)] = 1,159(2) SQ. FT. = 2,318 SQ. FT.

TOTAL SQ. FT. = 6,998 SQ. FT. (§255-6 GROSS FLOOR AREA - FIRST, SECOND AND THIRD FLOORS).

TOTAL SQ. FT. = 7,956 SQ. FT. (WITHOUT DEDUCTIONS).

SQ. FT. CALCULATIONS ARE ROUNDED OFF TO THE NEAREST FOOT

WALL LEGEND
2x6 OR 2x4 WALL CONST.
INTERIOR BEARING PARTITIONS
POURED CONC. WALL
STRUCTURAL LINES w/SOLID MD. STUDS

WILLIAM
BATEMAN
ARCHITECT

144 Route 59, Suite 2
Suffern, NY 10901
Tel. 845.517.0094
Fax. 845.517.0095

PROPOSED 2 FAMILY DWELLING FOR:
3 KING TERRACE
50.70 - 1 - 21
3 KING TERRACE, SPRING VALLEY, NY 10977
VILLAGE OF SPRING VALLEY, ROCKLAND COUNTY, NY

SEAL:

DATES:
07.02.24 FOR REVIEW ONLY
07.24.24 FOR REVIEW ONLY
08.26.24 FOR REVIEW ONLY
09.23.24 FOR REVIEW ONLY
09.25.24 FOR REVIEW ONLY
09.26.24 FOR REVIEW ONLY
09.30.24 FOR REVIEW ONLY
11.12.24 FOR REVIEW ONLY

PROJECT NO. S-0524

DRAWN BY: Y.F.

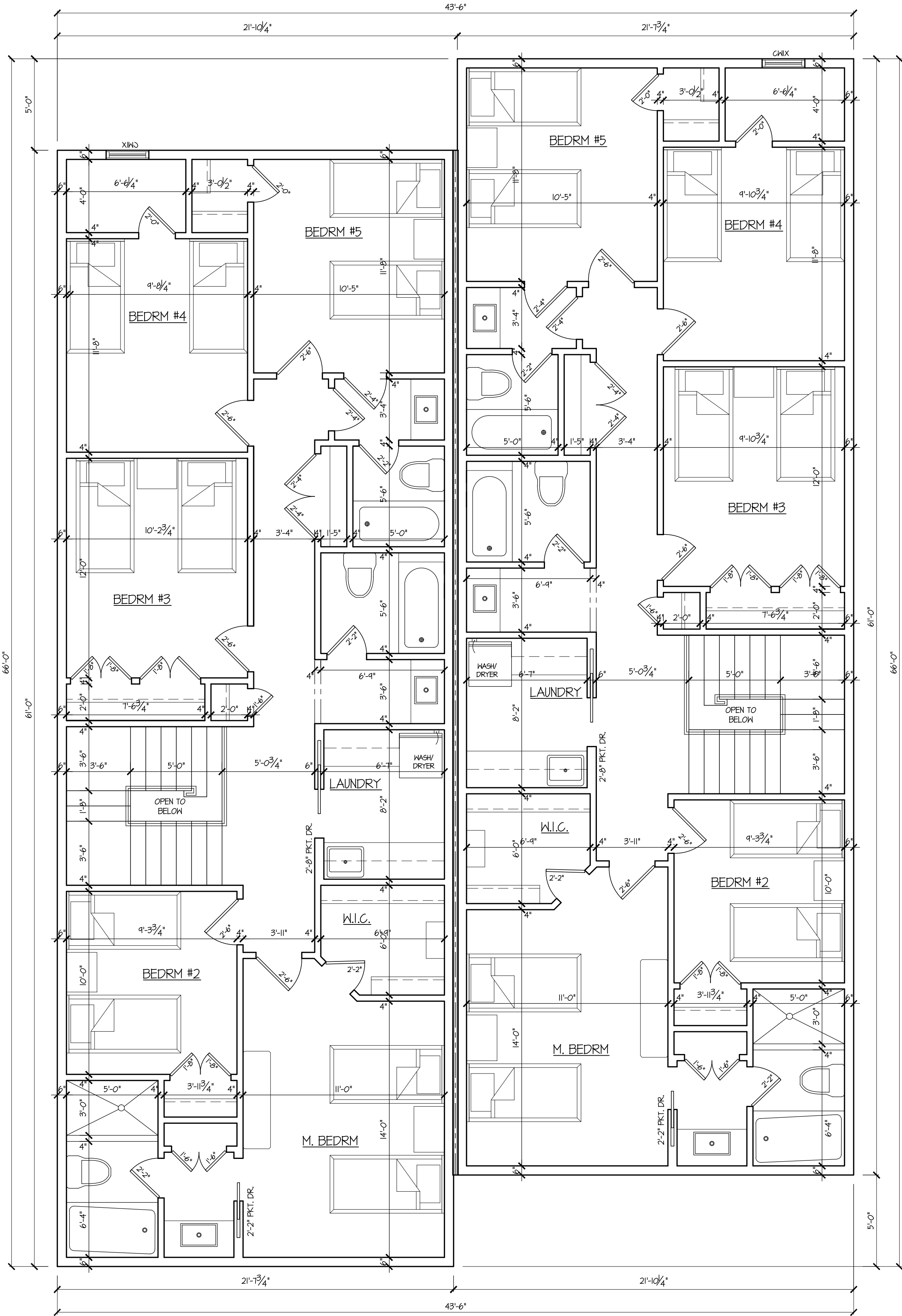
SCALE: 1/4" = 1'-0"

CONTEXT OF THIS SHEET:

THIRD FLOOR PLAN

SHEET NO.

A-2 of 2



1 SECOND FLOOR PLAN

SCALE : 1/4" = 1'-0"